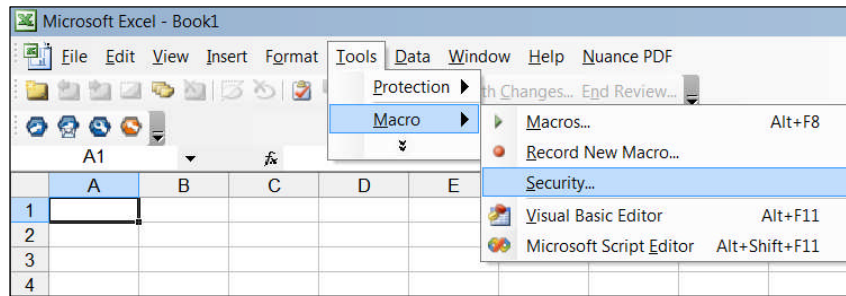
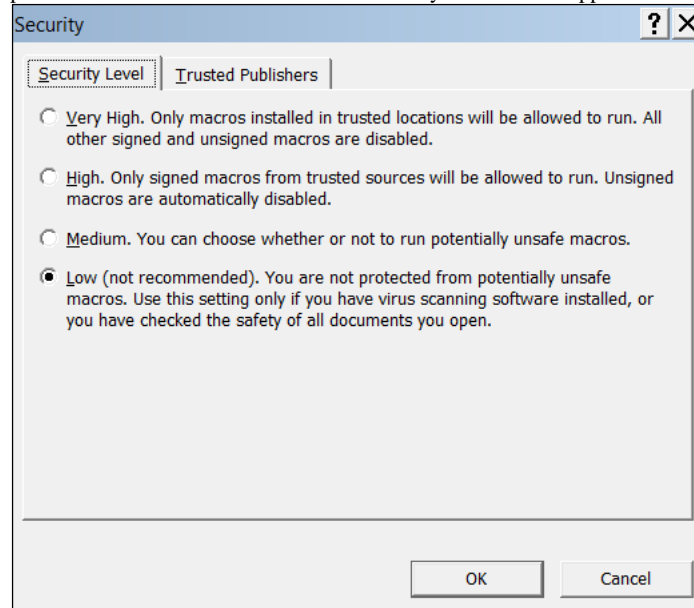


Excel VBA Security Settings for VORSIM in Excel

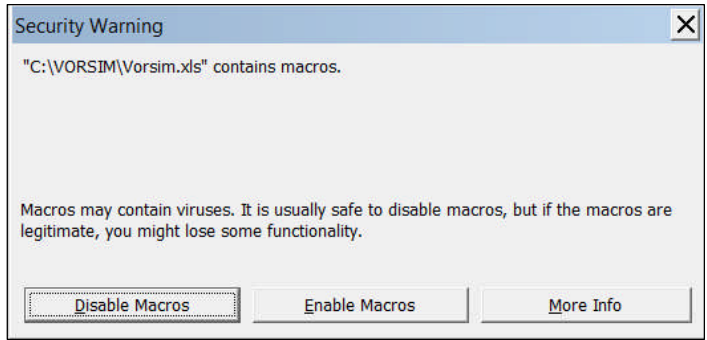


From Excel 2003 or earlier versions, security settings are found in the Tools Macro, Security pull-down menus as shown above. The security level choices appear as below.



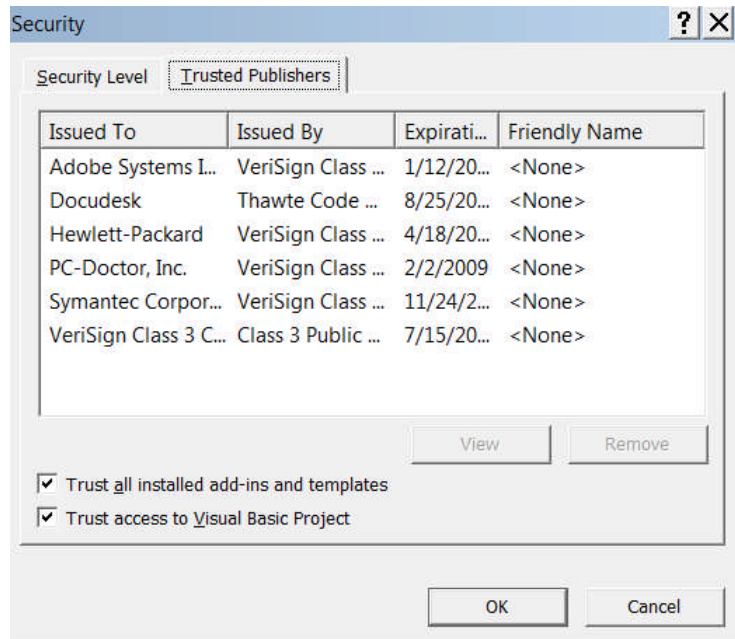
VORSIM programs are macros that must be free to run. Therefore **set macros to the Low level when working intensively with VORSIM**. If you set macros to a Medium level, you will get a message asking permission to run each macro which will prevent serious model building. If

you set macro security to the Very High or High level, you will not be able to run VORSIM programs.

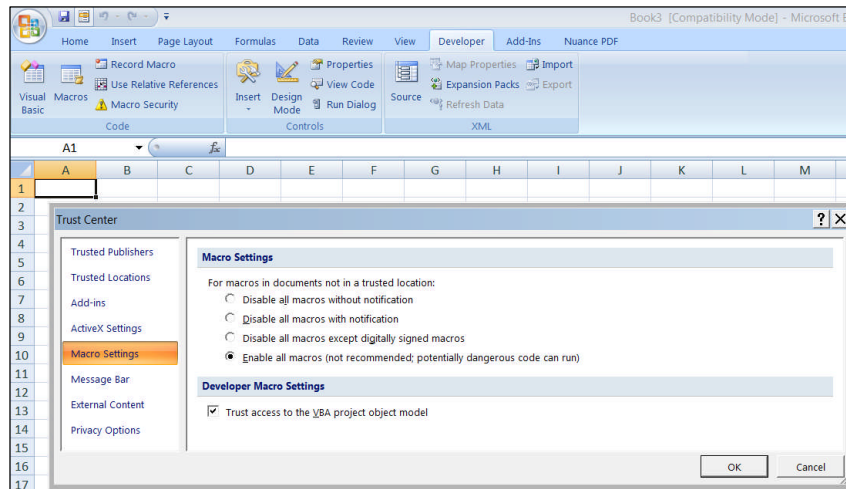


If you select a Medium security level, you will get a message like this every time you try to run a macro (and VORSIM consists of hundreds of macros).

At the bottom of the Trusted Publishers part of the Security menu **you should check both items as shown below**. Your VORSIM models with be Visual Basic Projects so they must be trusted if they are to be used. Similarly, add-ins are used in VORSIM occasionally so they also must be trusted.



In Excel 2007, the Macro Settings Menu is found in the ribbon by clicking the Macro Security button in the Code section of the Developer part of the ribbon. The choices to disable macros are essentially the same as in Excel 2003 and earlier versions.



If you are concerned about security with other Excel workbooks, you can set the security levels back to higher levels when you have finished your work with VORSIM.